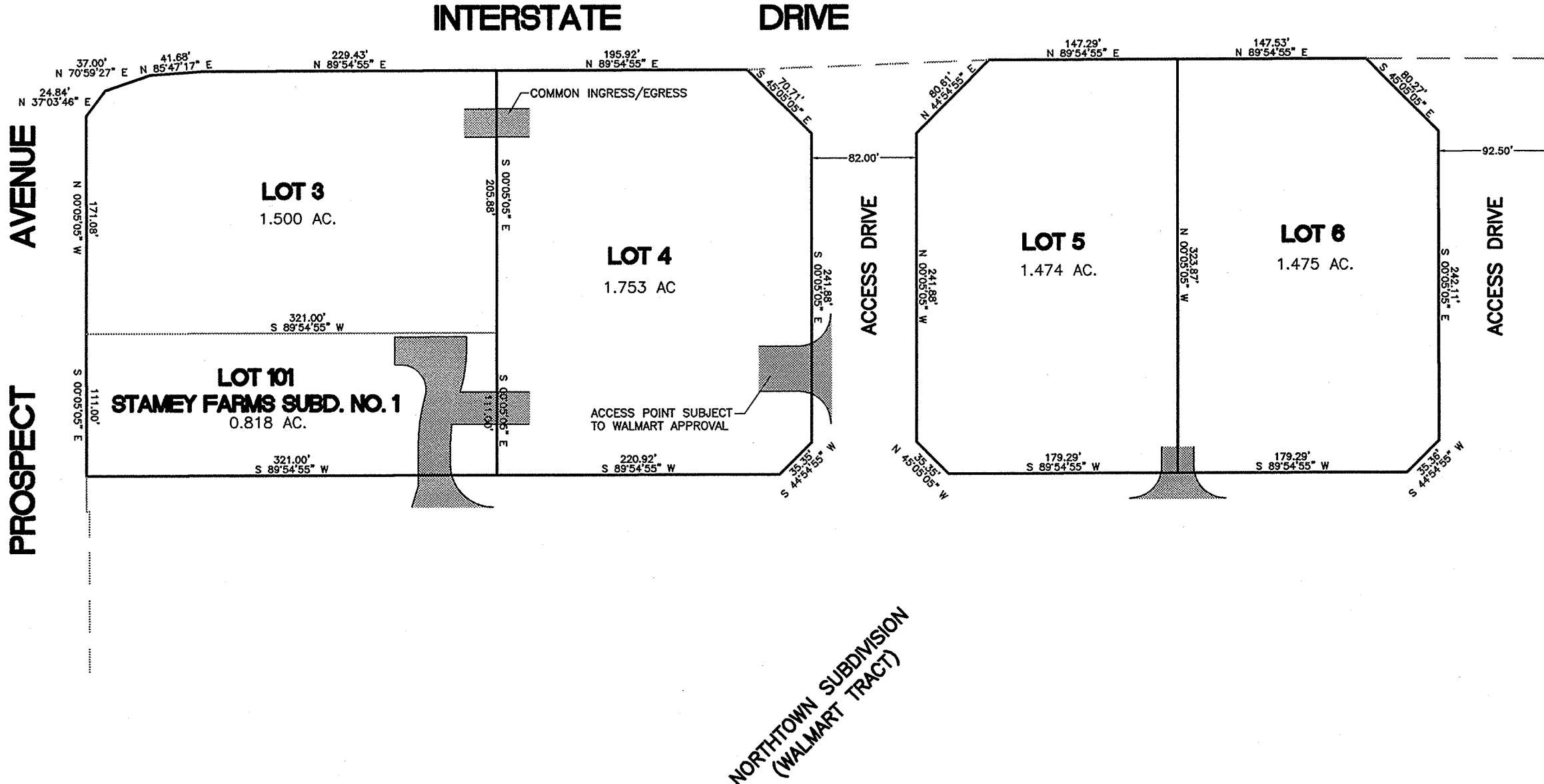
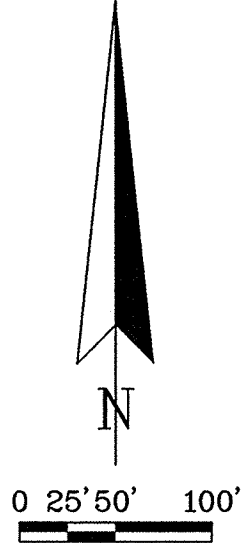


ACCESS PLAN STAMEY FARMS OUTLOTS



NORTHTOWN SUBDIVISION
(WALMART TRACT)

R:\2005\05024\05024 STAMEY-OUTLOTS-ACCESSPLAN.dwg, access plan, 8/2/2006 5:01:04 PM, a-philips3

Job # 05024
 Drawn By: ALP Date: 8/2/06 Revised:
HDC ENGINEERING
 Professional Design Firm License No. 184-003223
 Expires: 4/30/2007
 201 West Springfield, Suite 300,
 Champaign, Illinois 61824-0140
 Phone No. 217-352-6976