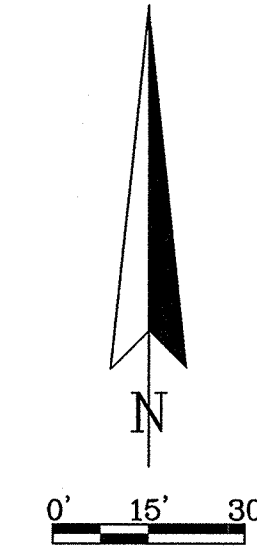


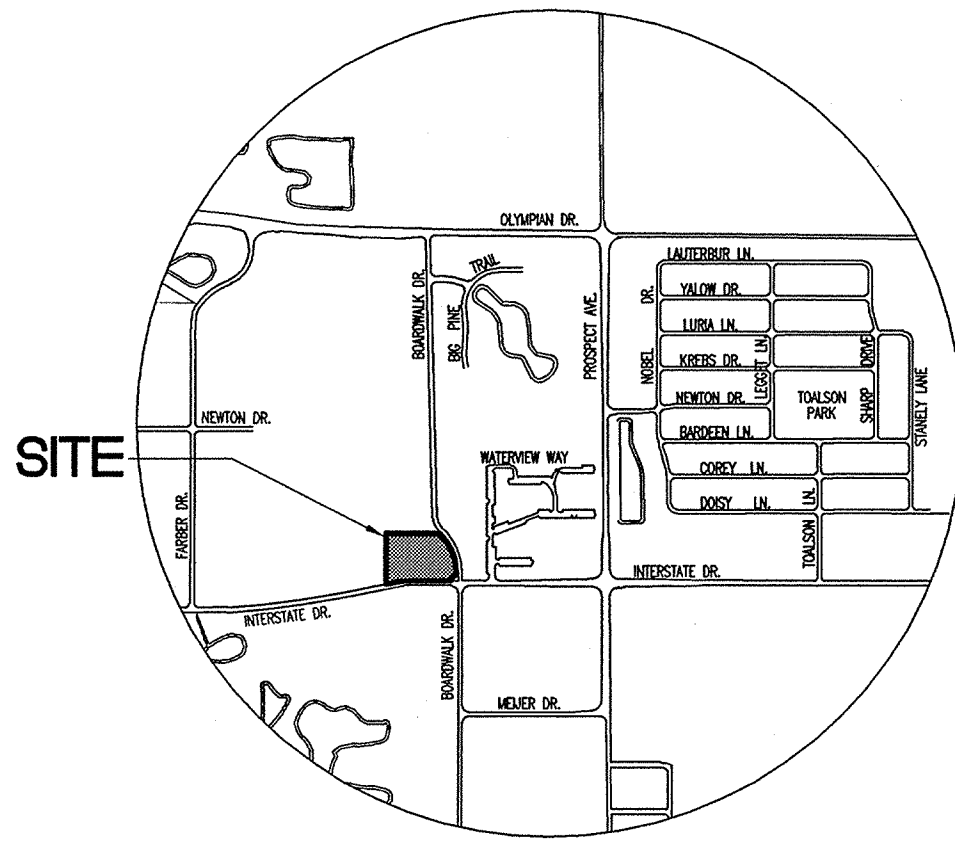
SITE ENGINEERING PLAN OLYMPIAN SURGICAL SUITES, LLC 1002 INTERSTATE DRIVE CHAMPAIGN, ILLINOIS

OWNER/DEVELOPER
R&B CHAMPAIGN ASTC LIMITED PARTNERSHIP
602 N. COUNTRY FAIR DRIVE
CHAMPAIGN, ILLINOIS 61821

ENGINEERS/SURVEYORS
HDC ENGINEERING, L.L.C.
201 W. SPRINGFIELD, SUITE 300,
P.O. BOX 140
CHAMPAIGN, ILLINOIS 61824-0140



- ### INDEX OF SHEETS
- C1. PAVING PLAN
 - C2. EXISTING CONDITIONS
 - C3. GRADING/EROSION CONTROL PLAN
 - C4. UTILITY PLAN
 - C5. NOTES AND SPECIFICATIONS
 - C6. DETAILS



LOCATION MAP

KEYNOTES SITE PLAN PAVING

- 1 CONSTRUCT ACCESSIBLE DETECTABLE WARNING SURFACE. (SEE SHEET C5 FOR DETAIL)
- 2 PROPOSED CATCH CURB (SEE SHEET C6 FOR DETAIL)
- 3 PROPOSED SPILL CURB (SEE SHEET C6 FOR DETAIL)
- 4 INSTALL PCC PERIMETER WALK. (SEE SHEET C6 FOR DETAIL)
- 5 HANDICAP ACCESSIBLE PARKING SPACE. (SEE SHEET C5 FOR DETAIL)
- 6 TRANSITION CURB FROM 6" TO 0" IN 2 FEET
- 7 FLAGPOLE AND SIGNAGE: SEE ARCHITECTURAL AND ELECTRICAL PLANS FOR DETAILS AND SPECIFICATIONS. ENSURE SIGNAGE IS IN COMPLIANCE WITH SITE-TRIANGLE REGULATIONS.
- 8 CATCH BARRIER CURB (ALL OTHER UNSPECIFIED CURBING TO BE SPILL BARRIER CURB)

UTILITY COMPANIES/AGENCIES LIST

- | | |
|---|---|
| <p>ELECTRIC
AMEREN IP
1112 WEST ANTHONY DRIVE
URBANA, IL 61802
PHONE: (217) 383-7283</p> <p>NATURAL GAS
AMEREN IP
1112 WEST ANTHONY DRIVE
URBANA, IL 61802
PHONE: (217) 383-7283</p> <p>WATER
ILLINOIS AMERICAN WATER COMPANY
201 DEVONSHIRE DRIVE
CHAMPAIGN, IL 61820
PHONE: (217) 373-3247</p> <p>TELEPHONE
AT&T
201 S. NEIL ST.
CHAMPAIGN, IL 61820
PHONE: (217) 398-7980</p> <p>CABLE
COMCAST (INSIGHT COMMUNICATIONS)
303 FAIRLAWN
URBANA, IL 61801
PHONE: (217) 383-8031</p> | <p>STREETS
CITY OF CHAMPAIGN
DEPARTMENT OF PUBLIC WORKS
702 EDGEBROOK DRIVE
CHAMPAIGN, IL 61820
PHONE: (217) 403-4710</p> <p>SANITARY SEWER
CITY OF CHAMPAIGN
DEPARTMENT OF PUBLIC WORKS
702 EDGEBROOK DRIVE
CHAMPAIGN, IL 61820
PHONE: (217) 403-4710</p> <p>URBANA-CHAMPAIGN SANITARY DISTRICT
P.O. BOX 669
URBANA, IL 61803
PHONE: (217) 367-3409</p> <p>CODE ENFORCEMENT - BUILDING
CITY OF CHAMPAIGN
BUILDING SAFETY DIVISION
307 SOUTH RANDOLPH STREET
CHAMPAIGN, IL 61820
PHONE: (217) 403-6100</p> <p>CODE ENFORCEMENT - ZONING
CITY OF CHAMPAIGN
PLANNING DEPARTMENT
102 NORTH NEIL STREET
CHAMPAIGN, IL 61820
PHONE: (217) 403-8800</p> |
|---|---|

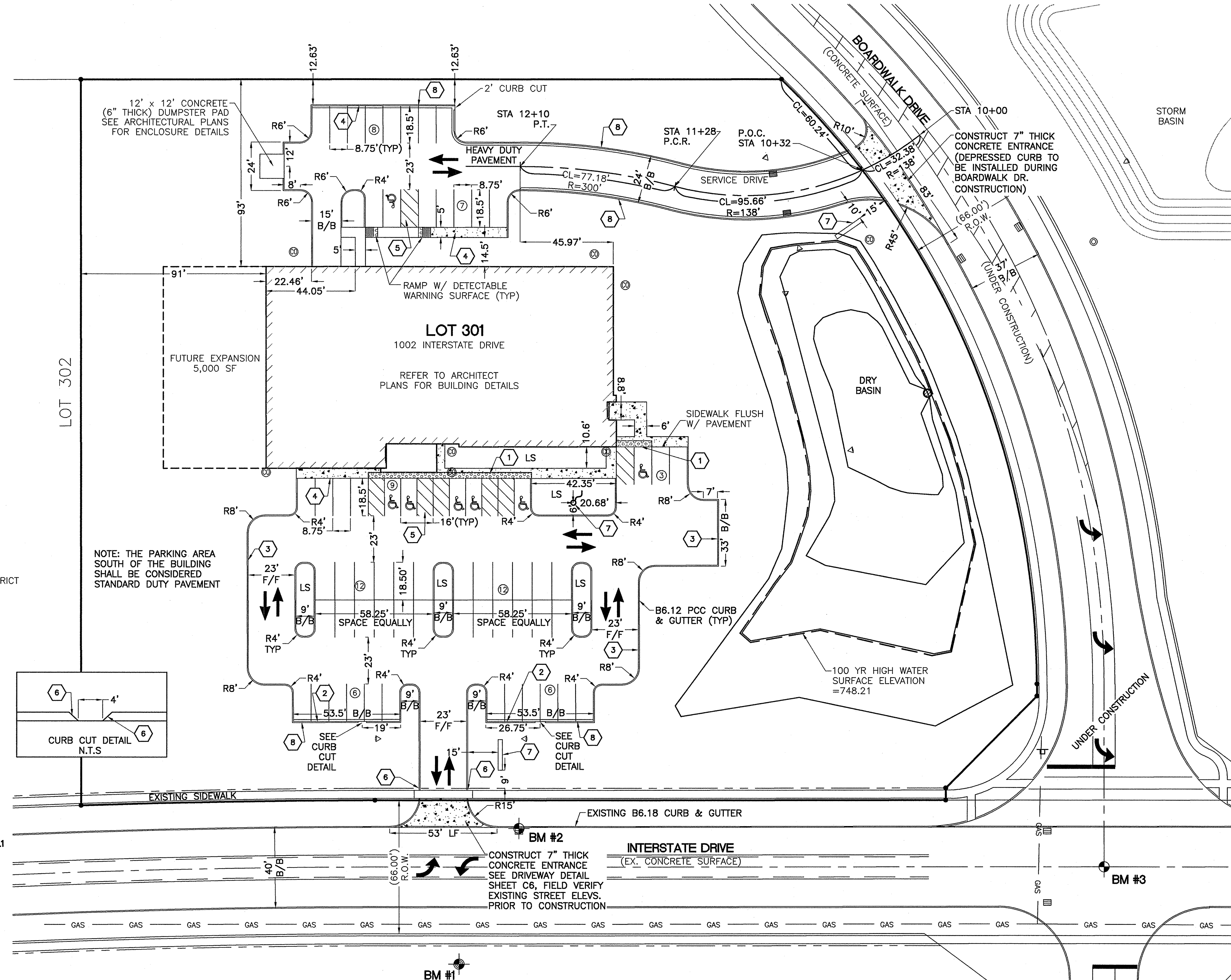
- BENCHMARKS**
- BENCHMARK #1**
ELEVATION: 753.16
DESCRIPTION: SANITARY MANHOLE RIM LOCATED 48 FEET SOUTH OF THE CENTERLINE OF INTERSTATE DR. AND 187 FEET EAST OF THE SOUTHWEST CORNER OF LOT BOUNDARY.
- BENCHMARK #2**
ELEVATION: 750.53
DESCRIPTION: TOP CASTING STORM INLET LOCATED 191 FEET NORTH OF THE CENTERLINE OF INTERSTATE DR. AND 216 FEET EAST OF THE SOUTHWEST CORNER OF LOT BOUNDARY.
- BENCHMARK #3**
ELEVATION: 748.71
DESCRIPTION: CENTER LINE INTERSECTION OF BOARDWALK DRIVE AND INTERSTATE DRIVE

CALL JULIE. 1-800-892-0123

WITH THE FOLLOWING:
COUNTY CHAMPAIGN
CITY-TOWNSHIP CHAMPAIGN
SECTION EAST 1/2
SECTION 35
TOWNSHIP 20 N
RANGE 8 E

48 HOURS BEFORE YOU DIG.
EXCLUDING SAT., SUN. & HOLIDAYS

NOTE: EXISTING UTILITIES ARE SHOWN AT APPROXIMATE LOCATIONS. FINAL UTILITY LOCATION SHOULD BE COORDINATED WITH THE RESPECTIVE UTILITY COMPANY.



LEGEND

- Found Iron Pin
- ⊙ Benchmark
- ⊕ Existing Storm Manhole
- ⊖ Existing Storm Inlet
- ⊗ Proposed Storm Manhole
- Silt Basket
- ⊙ Existing Sanitary Manhole
- ⊖ Proposed Sanitary Manhole
- Clean Out
- ⊗ Light Post
- ⊕ Telephone Pedestal
- ⊖ Water Valve
- ⊗ Sign
- Direction of Flow
- ☀ Coniferous Tree
- ☀ Deciduous Tree
- Boundary Line
- - - Easement Line
- STO- Existing Storm Line
- STO- Proposed Storm Line
- SAN- Existing Sanitary Line
- SAN- Proposed Sanitary Line
- GAS- Existing Gas Line
- GAS- Proposed Gas Line
- T-T- Buried Telephone Cable
- T-T- Proposed Telephone
- W-W- Existing Water Line
- W-W- Proposed Water Line
- SF-SF- Silt Fence
- 748.00- Existing Spot Elevation
- 748.00- Proposed Spot Elevation
- E.O.P. Edge of Pavement
- B/B Back of Curb to Back of Curb
- 756 Existing Contour Line
- LS Landscaping

PARKING SPACE SCHEDULE

- 56-STANDARD 8.75'x18.5' SPACES
- 7-HANDICAP ACCESSIBLE PARKING
- 63-TOTAL SPACES PROVIDED

TRAFFIC CONTROL NOTE

GENERAL CONTRACTOR SHALL ENSURE TRAFFIC CONTROL IS MAINTAINED ALONG INTERSTATE DRIVE DURING THE REMOVAL AND CONSTRUCTION OF ALL PAVEMENT IMPROVEMENTS AND UTILITY EXTENSIONS.

TRAFFIC CONTROL AND PROTECTION SHALL BE IN ACCORDANCE WITH APPLICABLE PORTIONS OF THE IDOT STANDARD SPECIFICATIONS FOR ROAD AND BRIDGE CONSTRUCTION AND HIGHWAY STANDARDS (LATEST EDITIONS).

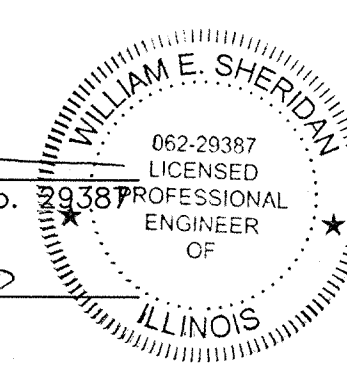
CONTRACTOR SHALL CONTACT THE CITY PRIOR TO ANY WORK WITHIN THE PUBLIC RIGHT-OF-WAY.

APPROVED BY THE CITY OF CHAMPAIGN ENGINEER

Signed: _____
City Of Champaign Engineer

Date: _____

SIGNED: *William E. Sheridan*
William E. Sheridan, L.L.P.E. No. 063-20387
License Expires 11/30/09
DATED: *SEP. 02, 2008*



**PAVING PLAN
1002 INTERSTATE DRIVE
CHAMPAIGN, ILLINOIS**

PROJECT NO.	08156	DATE	5/30/08	FB#	CHECKED	WES
DRAWN BY	ALJ/BDP	DATE	8/5/08	BY	PAVEMENT, FLAG, SIGN PER BSA	
REV#	1	DATE	9/8/08	BY	CWO ADDED ACCESSIBLE PARKING	

SHEET C1

HDC ENGINEERING
Professional Design Firm License No. 184-003223 Expires: 04/30/2009
201 West Springfield, Suite 300, P.O. Box 140, Champaign, Illinois 61824-0140
217-352-6976 FAX 217-356-0570